

# NEW STYLE

*Create a unique and contemporary image  
which your people aspire to wear*



**DEANE**





# SOPHISTICATED, CONTEMPORARY AND STILL FIT TO PURPOSE.

Classic tones, fresh sky blues, cool greys and new indigo. Micro checks and structured stripes. Refreshed basics with a clear focus on modern silhouettes.



*above* Women's Cuba Silver · Black Blouse  
*front page* Women's Kensington Blue Shirt  
*left* Men's Kensington Charcoal Shirt





# KENSINGTON

Crisp, smart, cotton rich, low crease premium yarn stripe fabric. Contrast X-stitch button attachment adds to the modern look. Cut away corporate collar on men's shirt can be worn with a tie or open for leisure. Slimmer fit up to sizes M and 12, added back box pleat on bigger sizes. Cotton rich fabric for extra breathability and comfort.



8 - 24

## WOMEN'S

85497 charcoal · white stripe  
85487 blue · white stripe  
85483 royal · white stripe



S - 5XL

## MEN'S

38197 charcoal · white stripe  
38187 blue · white stripe  
38183 royal · white stripe



# OXFORD

The new direction in corporate shirting is the more open weave of the fabric, offering volume with lightness. Four practical colours work well with a corporate or casual wardrobe. White details create a clean fresh look. Slimmer fit up to size M and 12, added back box pleat on bigger sizes. Optional chest pocket on women's styles. Cotton rich fabric, crease resistant.



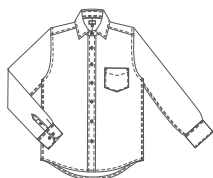
6 - 26

## WOMEN'S 3/4 SLEEVE

87193 grey      87187 sky  
87172 indigo      87122 white

## WOMEN'S LONG SLEEVE

87022 white



XS - 5XL

## MEN'S LONG SLEEVE

57093 grey      57087 sky  
57072 indigo      57022 white

## MEN'S SHORT SLEEVE

57193 grey      57187 sky







# CAMBRIDGE

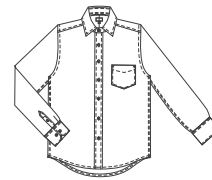
Cool, smart, cotton rich, low crease premium micro check fabric.  
 Contrast X-stitch button attachment and bias panels add to the modern look. Cut away corporate collar on men's shirt can be worn with a tie or open for leisure.  
 Slimmer fit up to sizes M and 12, added back box pleat on bigger sizes.  
 Cotton rich fabric for extra breathability and comfort.



6 - 26

**WOMEN'S**

84868 purple · white micro check  
 84898 black · white micro check



XS - 5XL

**MEN'S**

38268 purple · white micro check  
 38298 black · white micro check





# RIGA

Soft, practical easy care polyester/cotton fabric with lilac asymmetrical mini check. Women's blouse has concealed placket and adjustable sleeve strap. Men's has a classic fit and collar perfect in the office or on the go.



6 - 26

**WOMEN'S**

86172 lilac mini check



XS - 5XL

**MEN'S**

37072 lilac mini check





# ALICE & ATLAS

Practical, slim fit styles, polyester/cotton fabric with Nano finish for durability and easy care. Adjustable sleeve.



8 - 24

**WOMEN'S ALICE**

86698 black



S - 4XL

**MEN'S ATLAS**

35198 black





# NEW YORK

Easy fit styles in tone on tone polyester cotton stripe fabric.

Back action pleat for movement.

Chest pocket is optional on women's blouse.



8 - 24

## WOMEN'S 3/4 SLEEVE

85896 grey · black dobby stripe

## WOMEN'S LONG SLEEVE

85696 grey · black dobby stripe



S - 4XL

## MEN'S

33196 grey · black dobby stripe



# ATLANTA

Standard fit men's long and short sleeve shirt.  
Tailored two button cuff, structured collar.  
Polyester/cotton easy care fabric



S - 4XL

**MEN'S SHORT SLEEVE**

32822 white short sleeve



S - 4XL

**MEN'S LONG SLEEVE**

32722 white long sleeve



# CUBA

Soft, chic and comfortable, this bi-colour top is the perfect solution to a modern uniform ensemble. The knit back fabric gives ease of movement while the satin front adds a cosmopolitan zest for luxury. Machine washable with love and care as delicate garment.



## XS - 2XL

81398 black · black  
81362 red · black  
81383 royal · black  
81392 silver · black

# SAMANTHA

V-neck with front gather to give a relaxed look.

This top suits all figure types.

Quick dry and easy care.



**XS - 3XL**

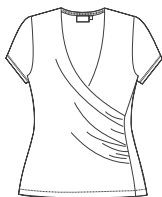
71882 navy

71862 red



# BRIGHTON

Cross over knit polyester top.  
Forward side seam with gathers to flatter the silhouette.  
Easy care and quick dry fabric.



## XS - 3XL

71562 red  
71575 cobalt  
71582 navy  
71568 purple

## Long Sleeve

71498 black

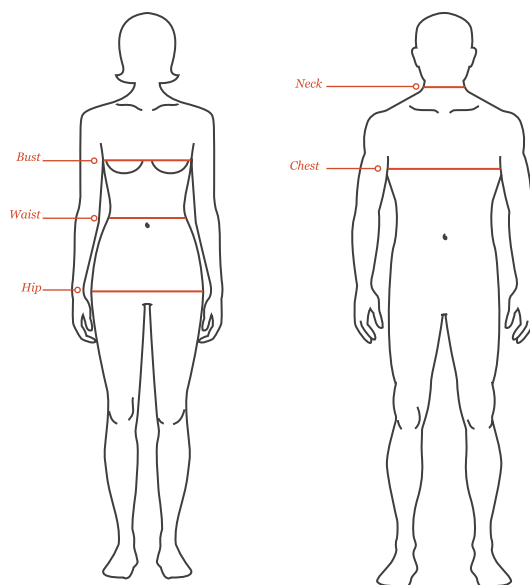
## MEASURING TIPS

Measure over underwear  
or light clothing

Keep the tape straight and level, snug but  
not tight around the body

Keep your body standing upright

If your measurement is the borderline,  
choose the larger size



# SIZING & MEASUREMENTS

**CHEST** Measure under arms around the fullest part of chest with arms at sides

**BUST** Measure under arms around the fullest part of bust with arms at sides

**WAIST** Measure around the natural waistline, keeping the tape comfortable

**HIP** Measure around the fullest part of the hips while standing upright

## WOMEN'S

ALPHA SIZE	SIZE	BUST	WAIST	HIP
2XS	6	82	65	90
XS	8	87	70	95
S	10	92	75	100
S	12	97	80	105
M	14	102	85	110
L	16	107	90	115
L	18	112	95	120
XL	20	117	100	125
2XL	22	122	105	130
2XL	24	127	110	135
3XL	26	132	115	140

## MEN'S

SIZE	NECK	CHEST
XS	35/36	80
S	37/38	88
M	39/40	96
L	41/42	104
XL	43/44	112
2XL	45/46	120
3XL	47/48	128
4XL	49/50	136
5XL	51/52	144

ALL MEASUREMENTS ARE IN CM'S





Men's Kensington Charcoal Shirt & Women's Cuba Silver · Black Blouse

## NEW ZEALAND

Auckland 09 262 2664  
Wellington 04 385 8474  
Christchurch 03 359 5922

**Freefax** 0800 877 626

**Email** [sales@deane.co.nz](mailto:sales@deane.co.nz)

[www.deaneapparel.co.nz](http://www.deaneapparel.co.nz)

## AUSTRALIA

Sydney 02 9208 3800  
Melbourne 03 8682 9071

**Freefax** 1800 629 981

**Email** [sales@deaneapparel.com.au](mailto:sales@deaneapparel.com.au)

[www.deaneapparel.com.au](http://www.deaneapparel.com.au)

# DEANE